



The NaviNetics **Skull Anchor Key** replaces the conventional base frame fixation method.

The Reusable Stereotactic System NN1000

Designed with the goal of increasing patient comfort, this system streamlines the workflow for the physician and optimizes the experience for the patient. The NaviNetics Reusable Stereotactic System contains a complete set of instruments for performing stereotactic and functional neurosurgery all without the bulk and invasiveness of a base frame. The complete system includes:

- Stereotactic Frame with manual Microdrive and X-Ray Reticles (NN1100)
- MR Imaging Localizer (NN0130)
- CT Imaging Localizer (NN0120)
- Key Placement Guide (NN0110)
- Ground Truth Fixture (NN1300)
- Sterilization Trays (NN0140 and NN0150)
- Procedure Pack (NN1200)
- Skull Anchor Rescue Screws (NN1400)

Who We Are

About Us

NaviNetics strives to make medical devices that change people's lives. We do this by listening to the patient and physician and translate these conversations into safe, effective, and high-quality device offerings. A commitment to quality and simplicity is at the forefront of everything we do.

Contact Us

Phone: 507-361-3570

Email: purchasing@navinetics.com

Web: www.navinetics.com

Ordering Information

Product Description	Order #
NaviNetics Reusable Stereotactic System	NN1000
NaviNetics Reusable Stereotactic Frame	NN1100
Procedure Pack (Non-Sterile)	NN1200
Skull Anchor Key Kit (Non-Sterile)	NN1210
Cannula and Stylet Kit (To-Target) (Non-Sterile)	NN1250
Skull Anchor Rescue Screw Kit (Non-Sterile)	NN1400
Ground Truth Fixture	NN1300
Key Placement Guide	NN0110
CT Localizer Kit	NN0120
MR Localizer Kit	NN0130
Frame Sterilization Tray	NN0140
Skull Anchor Key Sterilization Tray	NN0150
Alpha Omega Microdrive Adapter	NN0160
FHC Microdrive Adapter	NN0170



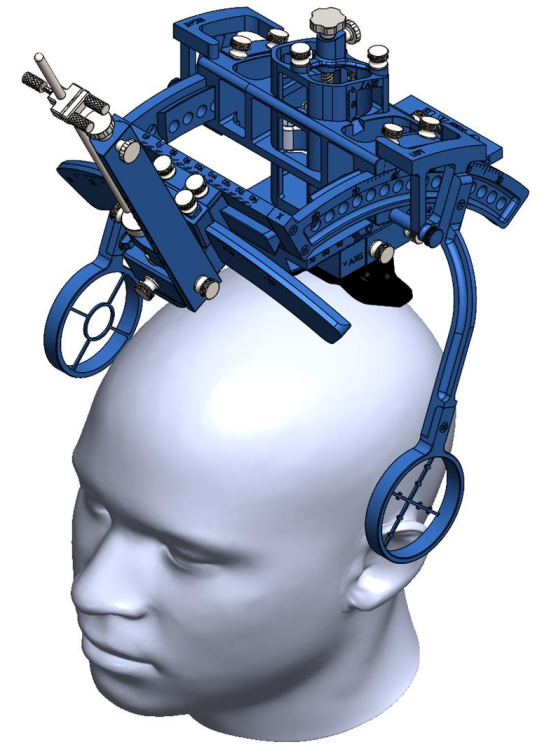
NAVINETICS, INC.

206 S Broadway

STE 700

Rochester, MN 55904

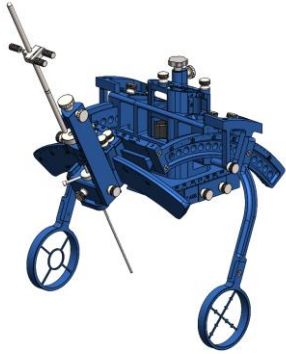
SALE5009 rev B



NAVINETICS
REUSABLE
STEREOTACTIC
SYSTEM



NaviNetics Reusable Frame Kit NN1100



The frame kit contains the surgical positioning frame, manual microdrive, DBS lead ruler, lead support rod, and X-Ray reticles.

Procedure Pack NN1200



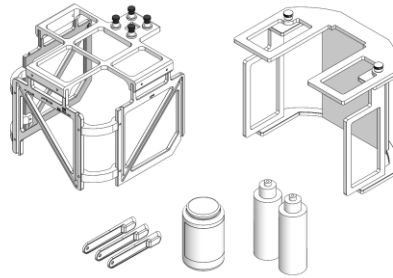
The procedure pack contains five sets of all the single use components needed for a procedure with the System. This includes the Skull Anchor Key, Bone Anchor Screws, drill guide, drill bit, screwdriver, cannula, stylet, and MR localizer tubing.

Skull Anchor Rescue Screw Kit NN1400



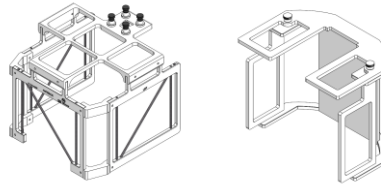
The rescue screw kit contains twenty larger thread diameter screws which may be used to secure the Skull Anchor Key to the patient's skull.

MR Localizer Kit NN0130



The kit contains everything needed to perform stereotactic MR Imaging including the Localizer, Copper Sulfate accessories and Scanner Cradle. The Localizer attaches seamlessly to the Skull Anchor Key. Protective storage case included.

CT Localizer Kit NN0120



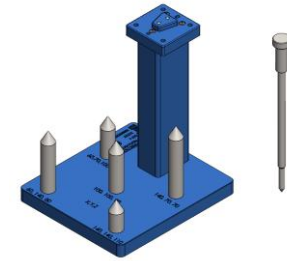
The CT Localizer is easily attached to the Skull Anchor Key for imaging. This kit also includes a Scanner Cradle and protective storage case.

Key Placement Guide NN0110



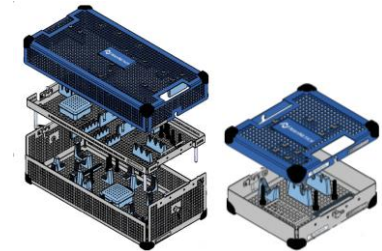
The Key Placement Guide is used to optimize placement of the Skull Anchor Key on the patient's head.

Ground Truth Fixture Kit NN1300



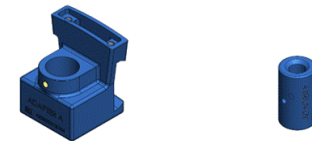
Used to verify mechanical accuracy of the positioning frame. Includes test probe and protective storage case.

Sterilization Trays



Used for sterilization and storage of the frame and skull anchor key accessories. (NN0140) and the smaller tray is used for the Skull Anchor Key kit (NN0150) components.

Microdrive Adapters NN0160, NN0170



Optional accessories to be used with Alpha Omega (NN0160) or FHC (NN01700) commercial microdrives for deep brain stimulation procedures.
